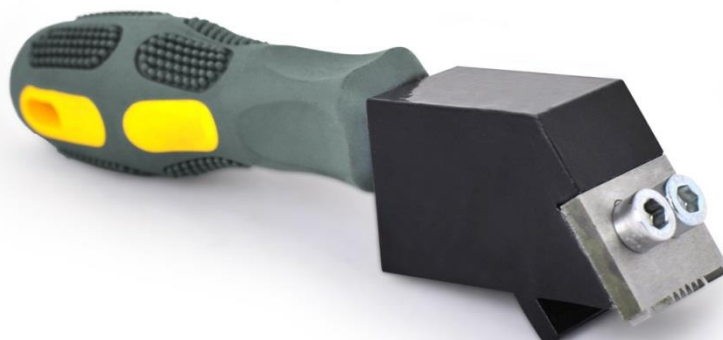


**NOVOTEST**

Cross Cut Adhesion Tester NOVOTEST AN-2409



Adhesion Multiblade Knife corresponds to: ISO 16276-2, ISO 2409, DIN 53151, ASTM B 335, ASTM D 3002, BS 3900-E6, BS EN ISO 2409, NF T 30-038.

Cross Cut Adhesion Tester NOVOTEST AN-2409 is designed to determine the adhesion (adhesive force) by method cuts (parallel or grid) with thicknesses paint to 200 μ s, according to ISO 2409, ISO 16276-2, ASTM B 3359. It can be used on flat and curved surfaces.

The method of parallel or lattice cuts is to assess the adhesion values while cutting through the coating down to the substrate by multiblade knife with the distance between the blades 1 mm, 2 mm and 3 mm. This produces a strip or grating with the same pitch. The place of cutting is cleaned and visually analyzed the value of adhesion by the nature and the area of destruction of the coating.

Structurally Cross Cut Adhesion Tester NOVOTEST AN-2409 is designed as a plastic handle with metal head for fastening multiblade knife, which is made from tool steel. Each knife has six main and two restrictive blades. User can sharpen blunt blades.

Advantages of Adhesion Multiblade Knife NOVOTEST AN-2409

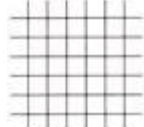
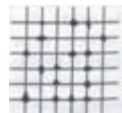
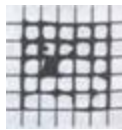
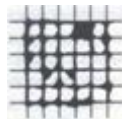

- Simplicity
- Usability
- Reliability
- Durability

Specifications of Adhesion Multiblade Knife NOVOTEST AN-2409

Number of cutters	3
Pitch between the working blades, mm	1, 2, 3 (other cutters optional)
Number of working blades	6
The coating thickness, μ s	<60 with pitch 1 mm; 60-120 with pitch 2 mm; 120-200 with pitch 3 mm.
Points identification and evaluation of adhesion	0-5 (for ISO 2409, ISO 16276-2, ASTM D3359)
Instrument dimensions, no more, mm	170x50x50



Evaluation of adhesion by the six-point system in accordance to ASTM B 3359, method B.

Point	Description	Surface appearance
0	The edges of the incision is completely sleek; no one of the squares of the lattice is not flaked off.	
1	Exfoliation of small flakes of the coating at the crossing the cuts; exfoliation area slightly greater than 5% of the lattice area.	
2	The coating exfoliate at the edges and / or at the crossing the cuts; exfoliation area significantly greater than 5% but not more than 15% of the lattice area.	
3	The coating exfoliate along the edges of the incisions partially or completely wide bands and / or at different parts of the squares; exfoliation area significantly greater than 15% but not more than 35% of the lattice area.	
4	The coating exfoliate along the edges of cuts wide bands and / or some squares are exfoliated partially or completely; exfoliation area considerably more than 35%, but not more than 65% of the lattice area.	
5	Any degree of exfoliation that can't be classified by 4th grade scale.	-----

Available options of Adhesion Multiblade Knife NOVOTEST AN-2409

- Interchangeable multiblade cutters (1 mm, 2 mm and 3 mm)
- Hex key

Standard set of Adhesion Multiblade Knife NOVOTEST AN-2409

- Adhesion multiblade knife
- Three interchangeable multiblade cutters (1 mm, 2 mm and 3 mm)
- Hex key
- Instruction manual
- Packing